

Custom Products

ITE (In-The-Ear),
ITC (In-The-Canal),
CIC (Completely-In-Canal),
IIC (Invisible-In-The-Canal)

Table of Contents

Overview

ITE Overview	4
ITC Overview	5
CIC Overview	6
IIC Overview	7

Preparation

Batteries/Battery Indicators	8
Insertion and Removal	11

Operation

Power On & Off	12
User Controls	12
Volume Control	13
Volume Control Indicators	15
Memory Change	16
Mute	16
Multiflex Tinnitus Level Control	17
Directional Settings	17
Telephone Use	17

Multiflex Tinnitus Technology	20
--	-----------

Accessories

Wireless Accessories	22
----------------------------	----

Hearing Instrument Care

Instrument Care	23
Service and Repair	27
Troubleshooting Guide	28

Tips for Better Communication	29
--	-----------

Safety Information	31
---------------------------------	-----------

FDA Information	33
------------------------------	-----------

FCC Information	38
------------------------------	-----------

My hearing instrument is a/an:

- ☐ ITE (In-The-Ear) see page 4.
- ☐ ITC (In-The-Canal) see page 5.
- ☐ CIC (Completely-In-Canal) see page 6.
- ☐ IIC (Invisible-In-The-Canal) see page 7.

My hearing instrument uses a:

- ☐ 13 battery (ITE) – Orange
- ☐ 312 battery (ITC) – Brown
- ☐ 10 battery (CIC) – Yellow
- ☐ 10 battery (IIC) – Yellow

Features, Controls and Identification

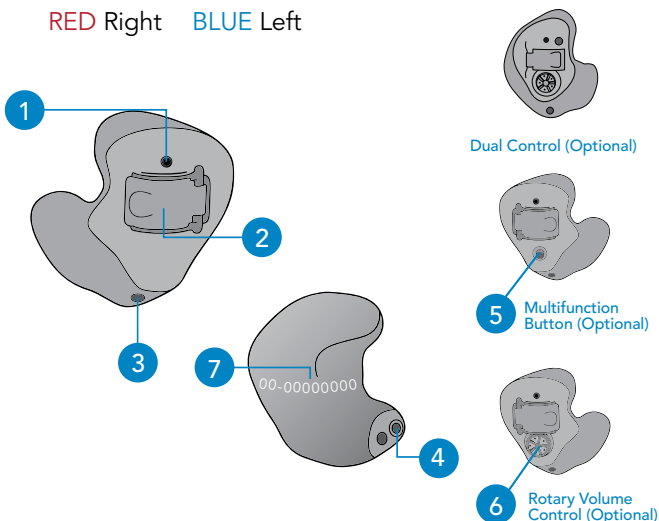
Your hearing instrument controls include:

1. Microphone
2. Battery compartment (on/off control)
3. Vent (optional)
4. Sound outlet (receiver) and wax protection
5. Multifunction button (optional)
6. Rotary volume control (optional)

Your hearing instrument can be identified by:

7. Location of serial number:

RED Right **BLUE** Left



ITE Battery Size: 13

Features, Controls and Identification

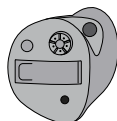
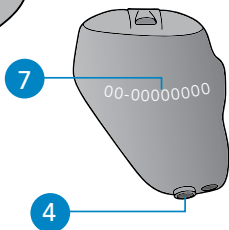
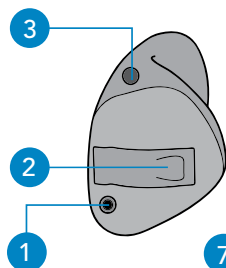
Your hearing instrument controls include:

1. Microphone
2. Battery compartment (on/off control)
3. Vent (optional)
4. Sound outlet (receiver) and wax protection
5. Multifunction button (optional)
6. Rotary volume control (optional)

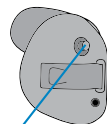
Your hearing instrument can be identified by:

7. Location of serial number:

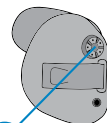
RED Right BLUE Left



Dual Control (Optional)



5 Multifunction Button (Optional)



6 Rotary Volume Control (Optional)

ITC Battery Size: 312

Features, Controls and Identification

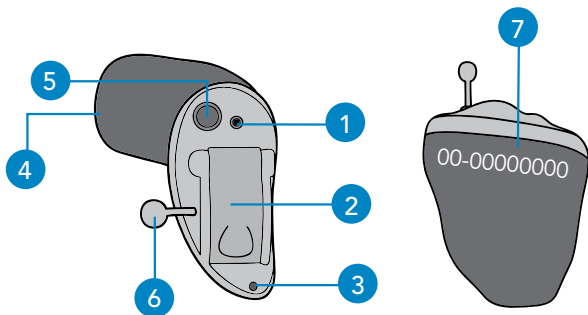
Your hearing instrument controls include:

1. Microphone
2. Battery compartment (on/off control)
3. Vent (optional)
4. Sound outlet (receiver) and wax protection
5. Multifunction button (optional)
6. Removal handle

Your hearing instrument can be identified by:

7. Location of serial number:

RED Right **BLUE** Left



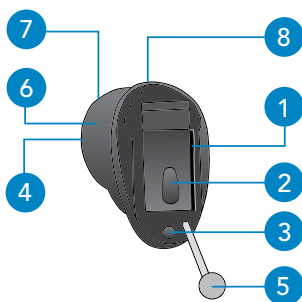
Features, Controls and Identification

Your hearing instrument controls include:

1. Microphone
2. Battery compartment (on/off control)
3. Vent (optional)
4. Sound outlet (receiver)
5. Removal handle

Your hearing instrument can be identified by:

6. Location of serial number
7. Side indicator R for Right, L for Left
8. White dot indicates the top of the hearing instrument.



Preparation

Batteries

Your hearing instrument uses a battery as its power source. This battery size can be identified by the orange (13), brown (312) or yellow (10) color code on the packaging.

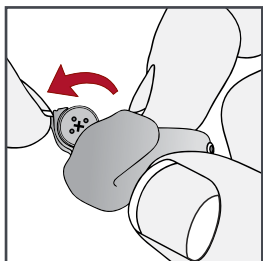
To insert or replace the battery:

1. Use the nail grip on the battery door.
2. Open the battery door gently and remove the old battery.
3. Remove the colored tab from the new battery.
4. Align the battery's "+" sign (flat side of the battery) with the "+" on the battery door.
5. Close the battery door.

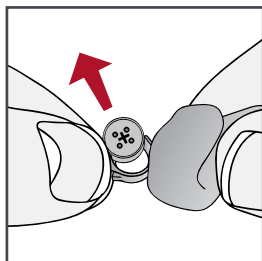
Battery Indicators

An indicator will sound when the battery voltage is low. You have approximately five minutes* to replace the battery. An indicator may also sound just before the battery stops working.

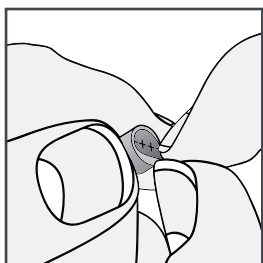
*Actual time between low battery indicator and shut down will vary depending on environmental noise levels and brand of battery used.



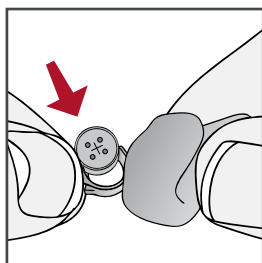
1



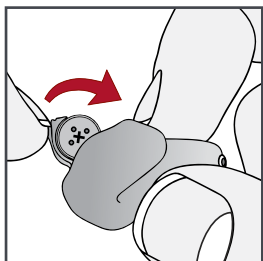
2



3



4



5




Preparation

Helpful Hints

- NEVER FORCE THE BATTERY DOOR SHUT. This could result in serious damage; if the door will not close securely, check that the battery is inserted correctly.
- Do not open the battery door too far or damage is likely to occur.
- Dispose of used batteries immediately in the proper waste or recycling container.
- Batteries vary in size and performance. Your hearing professional is your best source for lifespan estimates and verification that you are using the proper size and type.

WARNINGS

Batteries are dangerous if swallowed. To help prevent the accidental ingestion of batteries:

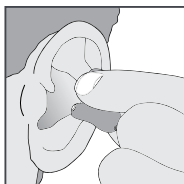
-  Keep out of reach of children and pets.
-  Check your medications before taking them – batteries have been mistaken for pills.
-  Never put batteries in your mouth, as they can easily be swallowed.

 **NATIONAL BUTTON BATTERY INGESTION
HOTLINE: 202-625-3333**

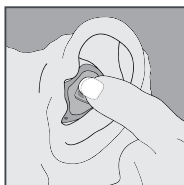
Insertion and Removal

To insert the hearing instrument:

1. Hold the instrument with your thumb and forefinger on the outer edges of the case.
2. Tilt your hand slightly forward and gently insert the canal tip of the instrument into your ear canal and rotate the instrument backward. Softly press the instrument into place with your fingertip.



1



2

To remove the hearing instrument:

Grasp the instrument with your thumb and forefinger; gently rotate it as you pull outward.

For instruments with removal handle: grasp removal handle and gently remove from ear.

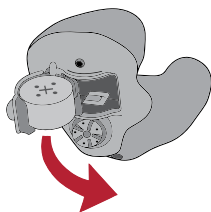
Helpful Hints

- Minor irritation and/or inflammation may occur as your ear becomes accustomed to having an object in it; if so, please contact your hearing professional.
- If an actual allergic reaction occurs, alternative materials are available; contact your hearing professional.
- Severe swelling, discharge from the ear, excessive wax or other unusual conditions warrant immediate consultation with a physician.

Power On & Off

To turn ON:

Insert a battery and completely close the battery door. Your instrument has a power-on delay which may require a few seconds. You may hear a tone indicating that your instrument is powered on.



To turn OFF:

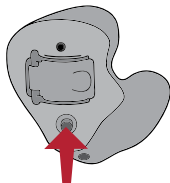
Open the battery door until the battery is no longer touching the battery contacts.

User Controls

Your hearing instrument's user control may have been customized by your hearing professional. Ask your hearing professional how the user control on your instrument is set.

Available User Control Functionality

The user control on your hearing instrument can respond differently depending on how long you activate (press) the button. Your instrument is capable of having one function assigned to a short press (press and release) and one function assigned to a long press (press and hold). The options selected on the next page indicate how your user control is configured.



Assigned User Control Settings

	Volume Control	Memory Change	Mute	Multiflex Tinnitus Level
Short Press (Press and Release)				
Long Press (Press and Hold)				

Volume Control

Power On Volume Level

Your hearing instrument has been set to a specific volume level by your hearing professional. If sounds are generally too loud or too soft, please contact your hearing professional for advice and adjustment. If your hearing instrument has been set up with a user adjustable volume control, temporary volume adjustments can be made.

Your instrument will always power on to the same volume setting (Volume Home) determined by your hearing professional.

Sprinkler Volume Control

If your user control is configured as a sprinkler volume control, each time you activate the user control, the volume of your hearing instrument changes.

Sprinkler volume control is configured by default to automatically decrease in volume before it increases. To make sounds louder, activate the user control. Repeat this motion until you are at the minimum

setting. The next time you activate the user control, the volume will increase one step. Continue to activate the user control until you reach the desired loudness.

NOTE: If 10 minutes or more have passed since the last volume change, the volume will automatically decrease before it increases.

Up/Down Volume Control

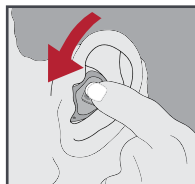
If your user control is configured as a dedicated up/down volume control, each time you activate the user control, the volume of your hearing instrument always changes in a specific direction (either up or down). For example, a short press and release may increase the volume while a long press and hold may decrease the volume in your hearing instrument.

Some user controls can be set for the Right instrument to increase volume and the Left instrument to decrease volume. Ask your hearing professional if this setting would benefit you.

Rotary Volume Control

Your hearing instrument may be equipped with a rotary volume control. Ask your hearing professional if you are not sure. To make volume adjustments, use your fingertip to rotate the volume control.

1. To make sounds louder, continue to rotate the control forward, toward your nose.
2. To make sounds softer, use your fingertip to rotate the control toward the back of your head.



Increase Volume



Decrease Volume

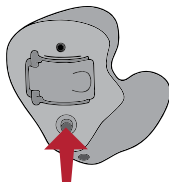
Volume Control Indicators

Your hearing professional may enable audible indicators, which highlight the current volume position.

Volume Level	Tone	Length of Tone
Volume Max	5 Beeps
Volume Step(s)	Click	—
Volume Home (Power on volume level)	3 Beeps	...
Volume Step(s)	Click	—
Volume Min	Single Tone	—

Memory Change

Your hearing professional may create multiple memories within your hearing instrument. These additional memories can be accessed by activating the user control on your hearing instrument.



If your user control is configured for memory changes, each time you activate the user control, the memory of your hearing instrument will increment through the available memories.

Memory Indicators

Your hearing professional may enable an audible indicator, which is presented while making a memory change. The indicator defaults to a voice saying “One, Two, Three or Four” to identify which memory your hearing instrument is in.

Mute

Long Press Mute

If your hearing instrument is configured with mute functionality, a long press and hold of the user control will mute your hearing instrument. If enabled by your hearing professional, you may hear an indicator prior to the hearing instrument muting. To unmute your hearing instrument, long press and hold the user control until audio is restored.

Multiflex Tinnitus Level Control

Your user control can also adjust the level of your Multiflex Tinnitus stimulus. Please refer to the section labeled Multiflex Tinnitus Technology (on page 20) for further information.

Directional Settings

Your hearing instrument may have a directional microphone to help improve speech understanding in noisy situations. Ask your hearing professional about your particular directional settings.

Telephone Use

Your hearing instruments can be customized with features to help you effectively communicate on the telephone. Ask your hearing professional about your telephone solution.

My hearing instruments have the following telephone setting(s):

- ☐ Automatic Telephone Memory and Automatic Telecoil. See next page.
- ☐ Manual Telephone Memory and Manual Telecoil. See next page. (Memory # _____).
- ☐ None

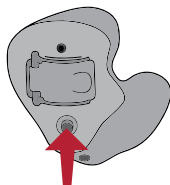
Automatic Telephone Memory and Automatic Telecoil

These options activate the telephone memory automatically when used with a hearing instrument compatible telephone. To use, place the telephone receiver on your ear as you normally would and the hearing instrument will automatically select the telephone memory. It might be necessary to move the telephone receiver slightly to find the best reception. Once the telephone is removed from the ear, the hearing instrument will switch back to the last used memory.

NOTE: Consult with your hearing professional if your instrument does not switch to the telephone memory automatically, if it is enabled.

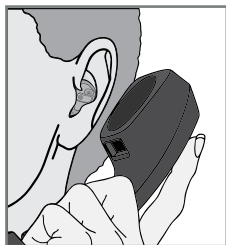
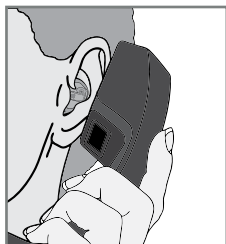
Manual Telephone Memory and Manual Telecoil

Manual access allows you to switch the hearing instruments into a telephone or telecoil memory, as needed. Ask your hearing professional which memory you should access for manual telephone use.



General Telephone Use

Some hearing instruments work best by holding the phone close to, but not fully covering your ear. In some instances, if you encounter whistling (feedback), tilt the receiver at an angle until the whistling stops. Additionally, the hearing instrument in the non-phone ear (ear opposite the phone) may switch to a telephone setting to reduce background sounds. Your hearing professional can provide instructions and techniques for your specific needs.



Ear-to-Ear Phone Streaming

The telephone memory in your hearing instrument may be equipped with an ear-to-ear phone streaming option. When you enter your telephone memory, the audio from your telephone will be streamed from the phone ear's hearing instrument to the opposite ear's hearing instrument. This allows you to hear the telephone conversation in both ears. Ask your hearing professional about your particular telephone settings.

Multiflex Tinnitus Technology

Introduction

Multiflex Tinnitus Technology can be used as a part of a tinnitus treatment program. Multiflex Tinnitus Technology plays a tinnitus stimulus through the hearing instrument. The tinnitus stimulus is programmed according to your hearing loss, and your hearing professional can adjust the settings of the tinnitus stimulus to meet your needs.

Sprinkler Tinnitus Stimulus Control

If your user control is configured as a sprinkler stimulus control, each time you activate the user control, the stimulus level in your hearing instrument changes.

Sprinkler stimulus control is configured by default to automatically decrease in level before it increases. To make the stimulus level louder, activate the user control. Repeat this motion until you are at the minimum setting. The next time you activate the user control, the level will increase one step. Continue to activate the user control until you reach the desired loudness.

NOTE: If 10 minutes or more have passed since the last stimulus level change, the level will automatically decrease before it increases.

Up/Down Tinnitus Stimulus Control

If your user control is configured as a dedicated up/down stimulus control, each time you activate the user control, the stimulus level in your hearing instrument always changes in a specific direction (either up or down). For example, a short press and release may increase the stimulus level while a long press and hold may decrease the stimulus level in your hearing instrument.

Some user controls can be set for the Right instrument to increase stimulus level and the Left instrument to decrease stimulus level. Ask your hearing professional if this setting would benefit you.

Accessories

Wireless Accessories*

There are several wireless accessories that allow you to control and maximize the full potential of your hearing instrument. Available functionality includes:

- Ability to adjust your instruments using a remote control.
- Ability to transmit television audio directly to your instruments.
- Ability to transmit remote microphone audio directly to your instruments.
- Ability to transmit your cell phone conversation directly to your instruments.

Consult with your hearing professional to determine if your hearing instruments have wireless capabilities and which accessories may be best for you.

**Wireless accessories are only compatible with hearing instruments that have 900 MHz wireless technology.*

Instrument Care

Keep your hearing instrument clean at all times. Heat, moisture and foreign substances can result in poor performance.

- Clean daily over a soft cloth to prevent damage from a fall to a hard surface.
- Use a cleaning brush to clean debris from around the microphone, receiver and battery compartment.
- Never use water, solvents, cleaning fluids or oil to clean your instrument.

Your hearing professional can provide further information on additional maintenance procedures for your hearing instrument, if needed.

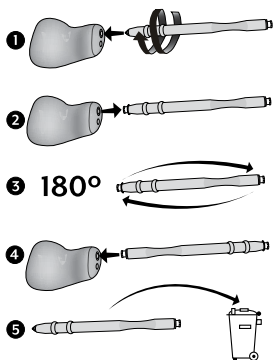
Helpful Hints

- When not wearing your hearing instruments, open the battery door to allow any moisture to evaporate.
- Do not take apart your hearing instruments or insert the cleaning tools inside them.
- When not in use, remove the batteries completely; place your hearing instrument in the storage container and store:
 - In a dry, safe place
 - Away from direct sunlight or heat to avoid extreme temperatures
 - Where you can easily find them
 - Safely out of reach of pets and children

Hear Clear™ Receiver Wax Guards

The hearing instrument integrates disposable Hear Clear earwax protection. The innovative wax guards prevent earwax accumulation in the hearing instrument receiver.

Wax Guard

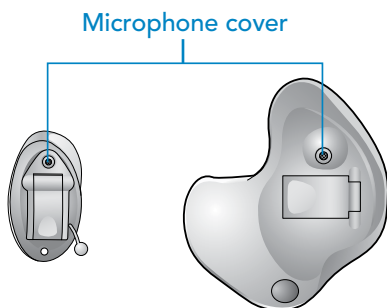


Custom Microphone Cover

The custom microphone cover protects the microphone from wax and debris. Your hearing professional will instruct you on maintenance of the microphone cover.

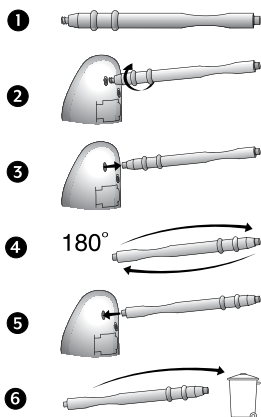
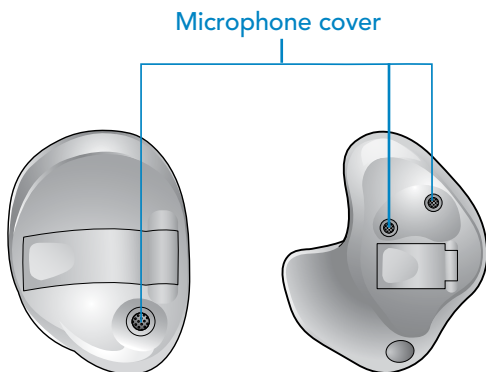
There are two sizes of custom microphone covers: one is small and one is large. The size of the microphone cover determines the method for removing and replacing.

Small Microphone Cover



-
-
-
-
-

Large Microphone Cover



Service and Repair

If, for any reason, your hearing instrument does not operate properly, do NOT attempt to fix it yourself. Not only are you likely to violate any applicable warranties or insurance, you could easily cause further damage.

Should your hearing instrument fail or perform poorly, check the guide on the next page for possible solutions. If problems continue, contact your hearing professional for advice and assistance. Many common problems may be solved in your hearing professional's office or clinic.

Troubleshooting Guide

SYMPTOM	POSSIBLE CAUSES	SOLUTIONS
Not Loud Enough	Low battery	Replace battery
	Blocked earmold/tubing/earbud	Clean or replace wax guard as needed
	Hearing change	Contact your hearing professional
	Debris buildup	Clean both microphone and receiver with brush
Inconsistent Performance	Low battery	Replace battery
	Blocked earmold/tubing/earbud	Clean or replace wax guard as needed
Unclear, Distorted Performance	Low battery	Replace battery
	Blocked earmold/tubing/earbud	Clean or replace wax guard as needed
	Defective hearing instrument	Contact your hearing professional
Dead	Low battery	Replace battery
	Blocked earmold/tubing	Clean or replace wax guard as needed
	Crimped tubing	Contact your hearing professional

Tips for Better Communication

Your hearing professional will recommend an appropriate schedule to help you adapt to your new hearing instrument. It will take practice, time and patience for your brain to adapt to the new sounds that your hearing instrument provides. Hearing is only part of how we share thoughts, ideas and feelings. Reading lips, facial expressions and gestures can help the learning process and add to what amplification alone may miss.

Please review the following simple communication tips:

For You

- Move closer to and look at the speaker
- Sit face-to-face in a quiet room
- Try different locations to find the best place to listen
- Minimize distractions
- Background noises may be frustrating at first; remember, you have not heard them for a while
- Let others know what you need; keep in mind that people cannot “see” your hearing loss
- Develop realistic expectations of what your hearing instruments can and cannot do
- Better hearing with hearing instruments is a learned skill combining desire, practice and patience

Tips for Better Communication

For Your Family and Friends

Your family and friends are also affected by your hearing loss. Request that they:

- Get your full attention before beginning to speak
- Look at you or sit face-to-face in a quiet room
- Speak clearly and at a normal rate and level; shouting can actually make understanding more difficult
- Rephrase rather than repeat the same words; different words may be easier to understand
- Minimize distractions while speaking

Safety Information

INTENDED USE: An air conduction hearing instrument is a wearable sound-amplifying device intended to compensate for impaired hearing. Hearing instruments are available in multiple gain/output levels appropriate to treat hearing losses ranging from mild-to-profound.

Your hearing instruments are designed to comply with the most stringent Standards of International Electromagnetic Compatibility. However, it is still possible that you may experience interference caused by power line disturbances, airport metal detectors, electromagnetic fields from other medical devices, radio signals and electrostatic discharges.

If you use other medical devices or wear implantable medical devices such as defibrillators or pacemakers and are concerned that your hearing instruments might cause interference with your medical device, please contact your physician or the manufacturer of your medical device for information about the risk of disturbance.

Your hearing instruments should not be worn during an MRI procedure or in a hyperbaric chamber.

Your hearing instruments are classified as a Type B applied part under the IEC 60601-1 medical device standard.

Your hearing instruments are not fully certified to operate in explosive atmospheres that may be found in coal mines or certain chemical factories.

Safety Information

Your hearing instruments should be stored within the temperature and humidity ranges of -40°C (-40°F) to +60°C (140°F) and 10 to 95 percent rH.

Your hearing instruments are designed to operate beyond the range of temperatures comfortable to you, from very cold up to 50°C (122°F).

Use on Aircraft*

The optional wireless capabilities that may be featured in your hearing instruments can be used on an aircraft as hearing instruments are exempt from the rules applied to other personal electronic devices on an aircraft.

International Use*

The optional wireless capabilities that may be featured in your hearing instruments are approved to operate at a radio frequency specific to your country or region and might not be approved for use outside your country or region. Be aware that operation during international travel may cause interference to other electronic devices, or other electronic devices may cause interference to your hearing instruments.

**Applies to wireless hearing instruments only.*

Required Information

The following additional information is provided in compliance with U.S. Food and Drug Administration (FDA) regulations:

WARNING TO HEARING AID DISPENSERS.

A hearing aid dispenser should advise a prospective hearing aid user to consult promptly with a licensed physician (preferably an ear specialist) before dispensing a hearing aid if the hearing aid dispenser determines through inquiry, actual observation or review of any other available information concerning the prospective user that the prospective user has any of the following conditions:

- i. Visible congenital or traumatic deformity of the ear.
- ii. History of active drainage from the ear within the previous 90 days.
- iii. History of sudden or rapidly progressive hearing loss within the previous 90 days.
- iv. Acute or chronic dizziness.
- v. Unilateral hearing loss of sudden or recent onset within the previous 90 days.
- vi. Audiometric air bone-gap equal to or greater than 15 decibels at 500 Hertz (Hz), 1,000 Hz and 2,000 Hz.
- vii. Visible evidence of significant cerumen accumulation or a foreign body in the ear canal.
- viii. Pain or discomfort in the ear.

IMPORTANT NOTICE FOR PROSPECTIVE HEARING AID USERS.

Good health practice requires that a person with a hearing loss have a medical evaluation by a licensed physician (preferably a physician who specializes in diseases of the ear) before purchasing a hearing aid. Licensed physicians who specialize in diseases of the ear are often referred to as otolaryngologists, otologists or otorhynolaringologists. The purpose of the medical evaluation is to assure that all medically treatable conditions that may affect hearing are identified and treated before the hearing aid is purchased.

Following the medical evaluation, the physician will give you a written statement that states that your hearing loss has been medically evaluated and that you may be considered a candidate for a hearing aid.

The physician will refer you to an audiologist or hearing aid dispenser, as appropriate, for a hearing aid evaluation.

The audiologist or hearing aid dispenser will conduct a hearing aid evaluation to assess your ability to hear with and without a hearing aid. The hearing aid evaluation will enable the audiologist or dispenser to select and fit a hearing aid to your individual needs.

If you have reservations about your ability to adapt to amplification, you should inquire about the availability of a trial-rental or purchase-option program. Many hearing aid dispensers now offer programs that permit you to wear a hearing aid for a period of time for a nominal fee after which you may decide if you want to purchase the hearing aid.

Federal law restricts the sale of hearing instruments to those individuals who have obtained a medical evaluation from a licensed physician. Federal law permits a fully informed adult to sign a waiver statement declining the medical evaluation for religious or personal beliefs that preclude consultation with a physician. The exercise of such a waiver is not in your best health interest and its use is strongly discouraged.

A hearing aid will not restore normal hearing and will not prevent or improve a hearing impairment resulting from organic conditions. Use of a hearing aid is only part of hearing habilitation and may need to be supplemented by auditory training and instruction in lip reading. In most cases infrequent use of a hearing aid does not permit a user to attain full benefit from it. Special care should be exercised in selecting and fitting a hearing aid whose maximum sound pressure level exceeds 132 decibels because there may be risk in impairing the remaining hearing of the hearing aid user.

CHILDREN WITH HEARING LOSS.

In addition to seeing a physician for a medical evaluation, a child with a hearing loss should be directed to an audiologist for evaluation and rehabilitation since hearing loss may cause problems in language development and the educational and social growth of a child. An audiologist is qualified by training and experience to assist in the evaluation and rehabilitation of a child with a hearing loss.

For hearing professionals

INDICATIONS FOR USE

The Multiflex Tinnitus Technology is a tool to generate sounds to be used in a Tinnitus Management Program to relieve patients suffering from tinnitus. The target population is primarily the adult population over 18 years of age.

The Multiflex Tinnitus Technology is targeted for healthcare professionals, which are treating patients suffering from tinnitus, as well as conventional hearing disorders. The fitting of the Multiflex Tinnitus Technology must be done by a hearing professional participating in a Tinnitus Management Program.

DEVICE DESCRIPTION

Multiflex Tinnitus Technology is a software function that generates sound which is programmed into a hearing aid. The hearing aid may be used in one of three modes of operation: as a hearing aid, as a tinnitus treatment device or as a hearing aid and tinnitus treatment device.

When enabled, the Multiflex Tinnitus Technology generates the sound and allows a patient's hearing professional to design and program appropriate settings for an individually prescribed sound treatment plan. The treatment plan should be used in a tinnitus management program for relief of tinnitus.

Multiflex Tinnitus Technology generates a broadband white noise signal that varies in frequency and amplitude. These characteristics are adjustable by the hearing professional and are specific to the prescribed therapy designed by the professional for the patient's needs and comfort.

The patient may have some control of the level or volume of the signal and the patient should discuss this adjustment as well as his or her comfort level and sound of the signal with their hearing professional.

WARNING TO HEARING CARE PRACTITIONER

A hearing care practitioner should advise a prospective sound generator user to consult promptly with a licensed physician (preferably an ear specialist) before using a sound generator if the hearing care practitioner determines through inquiry, actual observation or review or any other available information concerning the prospective user that the prospective user has any of the following conditions:

FDA Information

- i. Visible congenital or traumatic deformity of the ear.
- ii. History of active drainage from the ear within the previous 90 days.
- iii. History of sudden or rapidly progressive hearing loss within the previous 90 days.
- iv. Acute or chronic dizziness.
- v. Unilateral hearing loss of sudden or recent onset within the previous 90 days.

CAUTION: If set to the maximum output level and worn for periods of time exceeding the recommendations below, the patient's exposure to sound energy has the potential to exceed noise exposure limits. This device is intended for use for a maximum of sixteen (16) hours a day when set at the maximum output level.

For the patient

A tinnitus therapy device is an electronic device intended to generate noise of sufficient intensity and bandwidth to treat ringing in the ears. It can also be used as an aid in hearing external sounds and speech.

Multiflex Tinnitus Technology is a tool to generate sounds. It is recommended that this tool be used with appropriate counseling and/or in a tinnitus management program to relieve patients suffering from tinnitus.

TINNITUS THERAPY CONCEPTS AND BENEFITS

Multiflex Tinnitus Technology can be used as a part of a tinnitus treatment program.

Multiflex Tinnitus Technology plays a white noise through the hearing aid.

Multiflex Tinnitus Technology is programmed according to your hearing loss and preference, and your hearing professional can adjust the settings of Multiflex Tinnitus Technology to meet your needs.

Multiflex Tinnitus Technology may provide temporary relief of your tinnitus.

PRESCRIPTION USE ONLY

CAUTION: Federal law restricts this device to sale by or on the order of a doctor, audiologist or other hearing care practitioner licensed to dispense hearing instruments in your state.

The use of any sound generating tinnitus therapy device should be only on the advice and in consultation with your audiologist or hearing care practitioner. Your hearing professional will properly diagnose and fit the device to your personal needs and requirements. This should include its use in a prescribed tinnitus treatment program.

Your hearing professional will also be able to offer the appropriate follow-up care. It is important that you follow your hearing professional's advice and direction regarding such care.

WARNING: There are some potential concerns associated with the use of any sound generating tinnitus therapy device. Among them are the potential for worsening of tinnitus, a possible change in hearing thresholds and possible skin irritation at the point of contact with the device.

Multiflex Tinnitus Technology has been designed to minimize these concerns. However, should you experience or notice any of the above conditions or any dizziness, nausea, headaches or heart palpitations, you should immediately discontinue use of the device and seek a consultation with a medical, audiology or other hearing professional.

As with any device, misuse of the tinnitus therapy device could present some potentially harmful effects. Care should be taken to prevent the unauthorized use and to keep the device out of the reach of children and pets.

CAUTION: If set to the maximum output level and worn for periods of time exceeding the recommendations below, your exposure to sound energy has the potential to exceed noise exposure limits. You should not use your hearing device for more than sixteen (16) hours a day if your device is set at the maximum output level, nor should you use your device if your hearing professional has set the device at levels that exceed your comfort level.

Important notice for prospective sound generator users

Good health practice requires that a person with tinnitus have a medical evaluation by a licensed physician (preferably a physician who specializes in diseases of the ear) before using a sound generator. Licensed physicians who specialize in diseases of the ear are often referred to as otolaryngologists, otologists or otorhinolaryngologists.

The purpose of a medical evaluation is to assure that all medically treatable conditions that may affect tinnitus are identified and treated before the sound generator instrument is used.

TECHNICAL DATA

Multiflex Tinnitus Technology Maximum Output = 87 dB SPL (typical) when measured in a 2cc coupler per ANSI S3.22 or IEC 60118-7.

FCC Information

REGULATORY NOTICES

FCC ID: EOA-EXPCUSTOM

IC ID: 6903A-EXPCUSTOM

FCC NOTICE

This device complies with part 15 of the FCC rules and with RSS-210. Operation is subject to the following two conditions: (1) This device may not cause harmful interference, and (2) this device must accept any interference received, including interference that may cause undesired operation of the device.

Note: The manufacturer is not responsible for any radio or TV interference caused by unauthorized modifications to this equipment. Such modifications could void the user's authority to operate the equipment.

Hereby, Starkey Hearing Technologies declares that the Custom hearing instrument is in compliance with the essential requirements and other relevant provisions of Directive 1999/5/EC. A copy of the Declaration of Conformity can be obtained from the below addresses.

Starkey Hearing Technologies

6700 Washington Ave. South
Eden Prairie, MN 55344 USA



Wm. F. Austin House, Bramhall Technology Park
Pepper Road, Hazel Grove, Stockport SK7 5BX
United Kingdom



Waste from electronic equipment must be
handled according to local regulations

[illegible]

CE
0086