



with Bluetooth wireless technology

ELI is the smallest Bluetooth device available on the market.

- Weight: 5.2 grams
- Dimensions: 27mm x 16mm x 11mm

Range and Power Specifications:

- Range: 33 feet (10 m)
- Recharge time: 1.5 hours
- Talk time: 2.5 hours
- Standby mode: 140 hour operating time

Additional Features:

- Enables hands-free cell phone operation
- Rechargeable lithium-ion-polymer battery
- Charger includes international power supply
- Rotating Euro-connector for left and right ear compatibility
- FCC, CE and Bluetooth compliant
- No line-of-sight requirements
- 100 percent digital transmission
- Bluetooth v1.1 headset and hands-free profile
- Multi-functional control: on/off, call answer/end, pairing and call reject



© 2005 Starkey Laboratories, Inc.
All Rights Reserved
BROC8949-01-EE-ST 78949-000

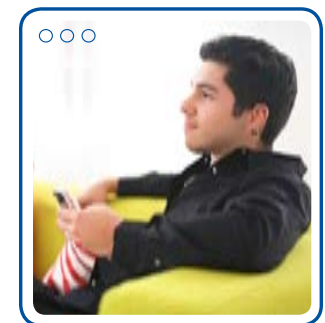
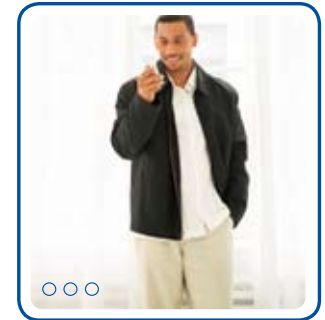


www.elihearing.com



with Bluetooth wireless technology

*Hands-Free Communication
with Hearing Aids*



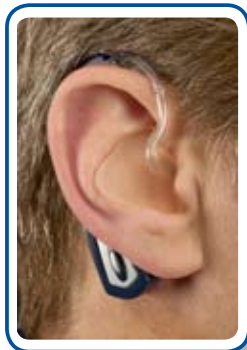


Hands-free Communication at the Touch of a Button

The new ELI™ (Ear Level Instrument) employs Bluetooth®, the world's most popular connection technology, to wirelessly connect your BTE hearing instruments to mobile phones and a wide variety of Bluetooth-compatible electronics, including computers, high-definition televisions and sound systems.



The lightweight ELI connects directly to your hearing instrument, so you can communicate hands free up to 33 feet



away from your phone, allowing you to perform other tasks at the same time. ELI can also be worn from a neck loop for connection via your BTE's telecoil.



ELI on neck loop

The first of its kind in the hearing care industry, ELI is the smallest audio Bluetooth device available. Synchronization between devices is easy, and it can be used anywhere in the world. So if you feel like you've been missing something, ELI can help you catch up in a hurry.

ELI is also very easy to operate. Its built-in microphone and single button allows you to answer or reject calls without even touching your mobile phone. And because ELI is digital, it eliminates the feedback and buzz that often occurs between mobile phones and hearing aids, making your communication crystal clear.

ELI is powered by a rechargeable battery and requires no energy from the battery in your hearing instrument. ELI's charge lasts up to 2.5 hours in continuous use, with a standby life of 140 hours.



Your hearing instruments reconnected you with the world of sound. Now ELI connects you and your digital BTEs to the 21st century! So if you've been waiting for technology to bring you digital sound without wires, wait no more. ELI is here.

Ask your hearing care professional about ELI today.

www.elihearing.com