

# Behind-the-Ear (BTE) 13 With Thin Tube Earbud

Your new hearing aids offer Starkey's most advanced technology with supreme sound quality and features. They are customizable to fit your unique hearing needs, helping you to stay connected to the people and things you love most.

## Hearing Aid Parts

1. Hearing Aid
2. Thin Tube
3. Microphone
4. Rocker Switch User Control
5. Comfort Bud Earbud
6. Battery Compartment (On/Off Control)
7. Retention Lock



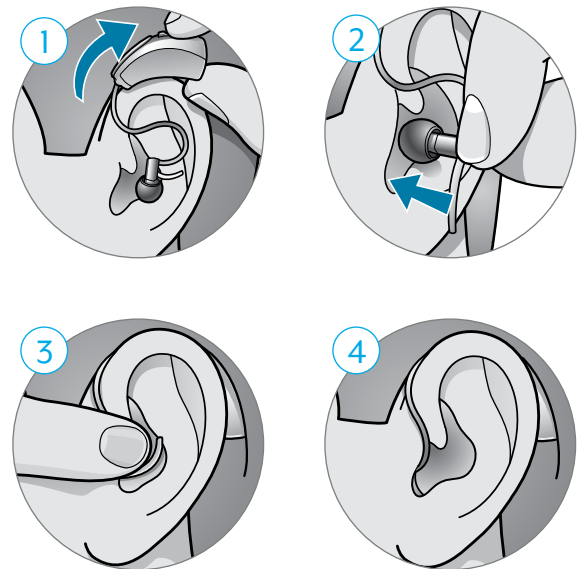
## Insertion and Removal

### To insert the hearing aid:

1. Gently wrap the hearing aid over your ear until it rests securely behind your ear.
2. Insert the earbud into your ear canal.
3. Place the lock into the bowl of your ear.
4. The earbud should not be visible and the thin tube should be snug against the head.

### To remove the hearing aid:

1. Gently grasp the thin tube at the opening of the ear canal with your thumb and forefinger.
2. Gently pull the earbud out of your ear canal.
3. Remove the hearing aid from behind your ear.



[How-to Video](#)

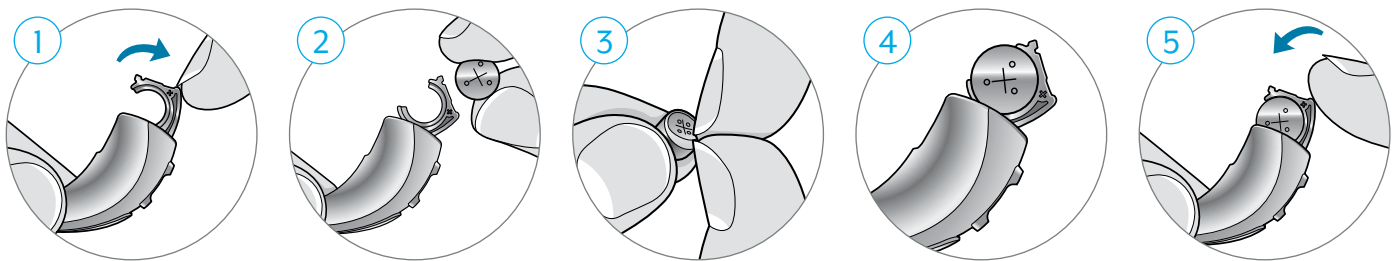
## Batteries

Your hearing aid uses a battery as its power source. To insert or replace the battery:

1. Use the finger pick to gently open the battery door.
2. Remove the old battery.
3. Remove the colored tab from the new battery. For best results, wait 3-5 minutes after removing the tab before inserting the battery.
4. Insert into the battery door, "+" side up.
5. Close the battery door.

### Battery Indicator

You will hear an indicator through your hearing aid when battery voltage is low and the battery needs replacing.



[How-to Video](#)

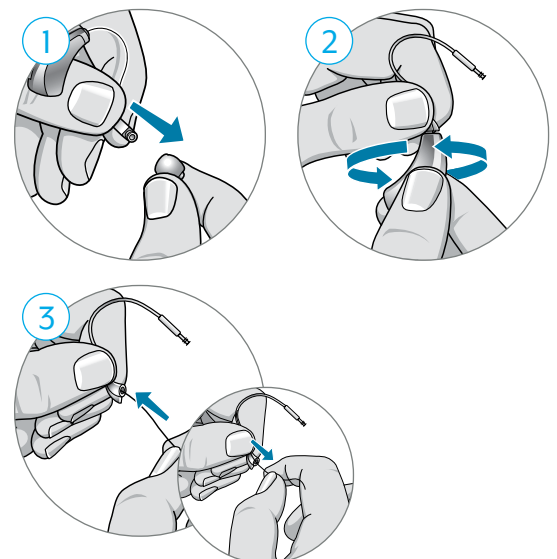
## Hearing Aid Care

### Cleaning Your Hearing Aids

- Use the cleaning brush or soft cloth to clean debris from around the user control, microphone, battery compartment, thin tube and earbud.
- Replace the earbud if it becomes misshapen or no longer fits comfortably in your ear.
- Never use water, solvents, cleaning fluids or oil to clean your hearing aid.

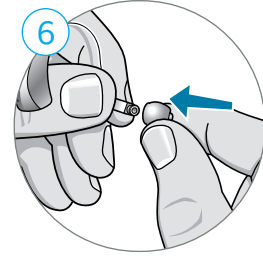
### Cleaning the Thin Tube and Earbud

1. Pull firmly on the earbud until it separates from the thin tube.
2. Unscrew the thin tubing from the tip of the hearing aid.
3. Thread the cleaner through the thin tubing, starting at the end just removed from the hearing aid until it extends through to the other end of the tubing. Any debris should push out the end of the thin tube.



### **Cleaning the Thin Tube and Earbud** *(Continued)*

4. Brush away any additional debris before removing the cleaner from the thin tube.
5. Brush away any debris on the earbud before re-attaching to the thin tube.
6. To attach the earbud, place the end of the thin tube into the cylinder-shaped opening in the middle of the earbud. Push firmly to ensure the earbud is secure. The earbud should be pushed on far enough so that the threaded portion of the thin tube is inside of the earbud.



### How-to Video



For more help, visit [Starkey.com/Support](https://www.starkey.com/support)