

## PRODUCT GUIDE



# Behind-the-Ear Rechargeable (BTE R)

With Thin Tube and Earbud

Your new hearing aids offer Starkey's most advanced technology with supreme sound quality and features. They are customizable to fit your unique hearing needs, helping you to stay connected to the people and things you love most.

## Hearing Aid Parts

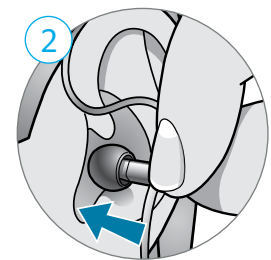
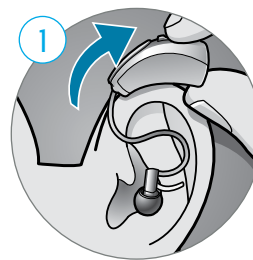
1. Hearing Aid
2. Thin Tube
3. Microphone
4. Push Button User Control
5. Comfort Bud Earbud
6. Charging Contacts
7. Retention Lock



## Insertion and Removal

### To insert the hearing aid:

1. Gently wrap the hearing aid over your ear until it rests securely behind your ear.
2. Insert the earbud into your ear canal.
3. Place the lock into the bowl of your ear.
4. The earbud should not be visible and the thin tube should be snug against the head.



### To remove the hearing aid:

1. Gently grasp the thin tube at the opening of the ear canal with your thumb and forefinger.
2. Gently pull the earbud out of your ear canal.
3. Remove the hearing aid from behind your ear.

[How-to Video](#)

## Charging Your Hearing Aids

Your hearing aid uses a rechargeable battery as its power source. To charge the battery:

1. Plug your charger into an outlet.
  2. Place your hearing aids in the charging ports with the earbuds resting inside the case.
  3. Your hearing aids will turn off automatically and begin to charge.
- The front of the charger is equipped with two LED indicators to provide information about hearing aid charging. The front LED indicators will glow green to indicate successful charging.
  - When the hearing aids are fully charged (approx 3.5 hrs charge time), the front LED indicators will be solid green.
  - Your hearing aids will automatically power on when removed from the charger.

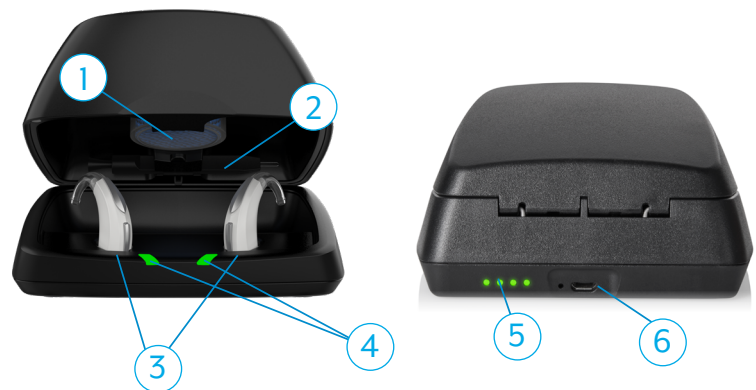
### Battery Indicator

You will hear an indicator through your hearing aid when battery voltage is low and the battery needs charging.

## How-to Video

### Hearing Aid Charger Parts

1. Desiccant Puck Holder
2. Cleaning Brush
3. Charging Ports
4. Hearing Aid Charging LEDs
5. On-board Battery LEDs
6. Power Cord Port



### Desiccant Puck

The desiccant puck will be effective for 3–6 months depending on moisture in the hearing aids and humidity. The color will fade from blue to white, indicating a need for replacement.

### On-board Battery:

- The back of the charger is equipped with four LED indicators to provide information about the status of the on-board battery. The on-board battery allows charging of the hearing aids up to three times while the charger is away from a power source.
- When away from a power source, the back LED indicators will be solid green indicating the amount of charge available for the on-board battery. The LED indicators will turn off after 10 seconds to preserve power.

**On-board Battery** *(Continued)*

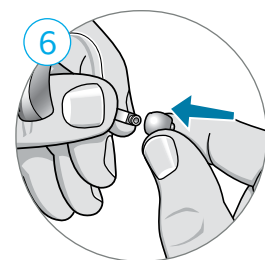
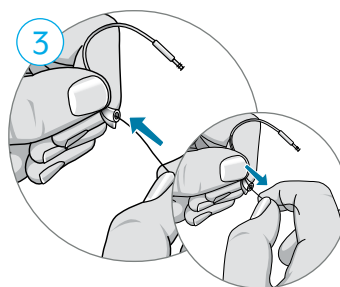
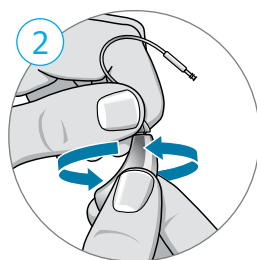
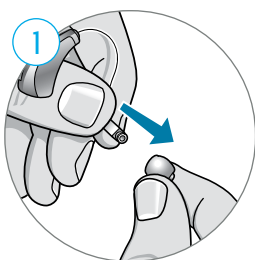
- One blinking LED on the back of the charger indicates that the on-board battery is low and the charger should be connected to a power source.
- When plugged into a power source, the back LED indicators will glow green to indicate successful on-board battery charging.

**Hearing Aid Care****Cleaning Your Hearing Aids**

- Use the cleaning brush or soft cloth to clean debris from around the user control, microphone, charging contacts, thin tube and earbud.
- Replace the earbud if it becomes misshapen or no longer fits comfortably in your ear.
- Never use water, solvents, cleaning fluids or oil to clean your hearing aid.

**Cleaning the Thin Tube and Earbud**

1. Pull firmly on the earbud until it separates from the thin tube.
2. Unscrew the thin tubing from the tip of the hearing aid.
3. Thread the cleaner through the thin tubing, starting at the end just removed from the hearing aid until it extends through to the other end of the tubing. Any debris should push out the end of the thin tube.
4. Brush away any additional debris before removing the cleaner from the thin tube.
5. Brush away any debris on the earbud before re-attaching to the thin tube.
6. To attach the earbud, place the end of the thin tube into the cylinder-shaped opening in the middle of the earbud. Push firmly to ensure the earbud is secure. The earbud should be pushed on far enough so that the threaded portion of the thin tube is inside of the earbud.

**How-to Video**

For more help, visit [Starkey.com/Support](https://www.starkey.com/support)