

PRODUCT GUIDE



Receiver-In-Canal (RIC) 312 With Earmold

Your new hearing aids offer Starkey's most advanced technology with supreme sound quality and features. They are customizable to fit your unique hearing needs, helping you to stay connected to the people and things you love most.

Hearing Aid Parts

1. Hearing Aid
2. Cable
3. Receiver
4. Microphone
5. Rocker Switch User Control
6. Earmold
7. Battery Compartment (On/Off Control)
8. Removal Handle



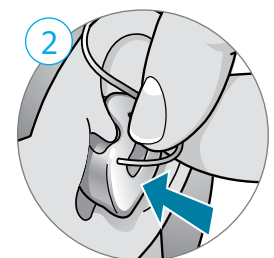
Insertion and Removal

To insert the hearing aid:

1. Gently wrap the hearing aid over your ear until it rests securely behind your ear
2. Insert the earmold into your ear canal
3. Softly press the earmold into place with your fingertip.

To remove the hearing aid:

1. Gently grasp the cable at the opening of the ear canal with your thumb and forefinger
2. Gently pull the earmold out of your ear canal
3. Remove the hearing aid from behind your ear



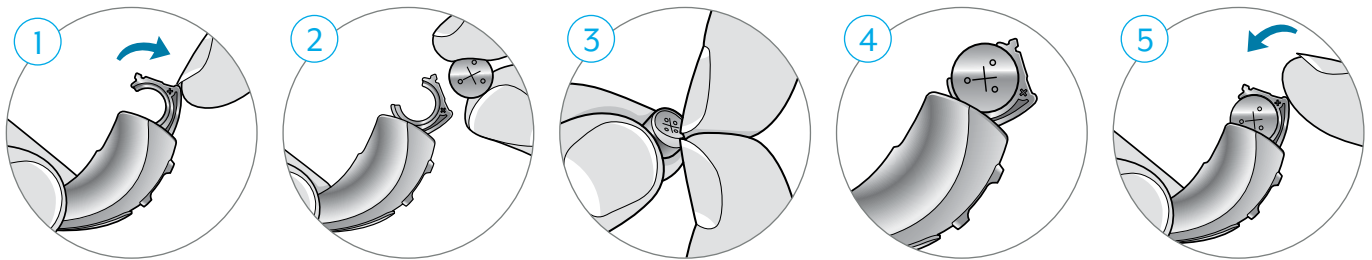
Batteries

Your hearing aid uses a battery as its power source.
To insert or replace the battery:

1. Use the finger pick to gently open the battery door.
2. Remove the old battery.
3. Remove the colored tab from the new battery.
For best results, wait 3-5 minutes after removing the tab before inserting the battery.
4. Insert into the battery door, "+" side up.
5. Close the battery door.

Battery Indicator

You will hear an indicator through your hearing aid when battery voltage is low and the battery needs replacing.



[How-to Video](#)

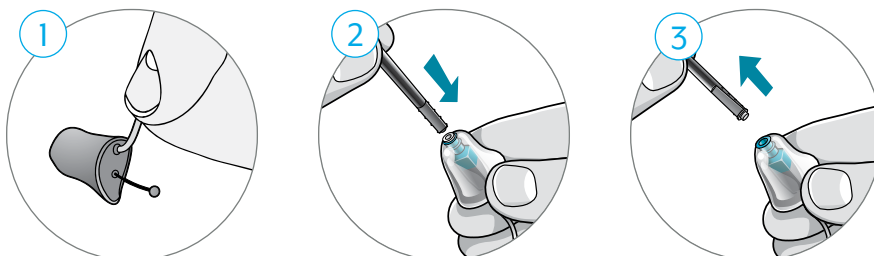
Hearing Aid Care

Cleaning Your Hearing Aids

- Use the cleaning brush or soft cloth to clean debris from around the user control, microphone, battery compartment, receiver and earmold.
- Never use water, solvents, cleaning fluids or oil to clean your hearing aid.

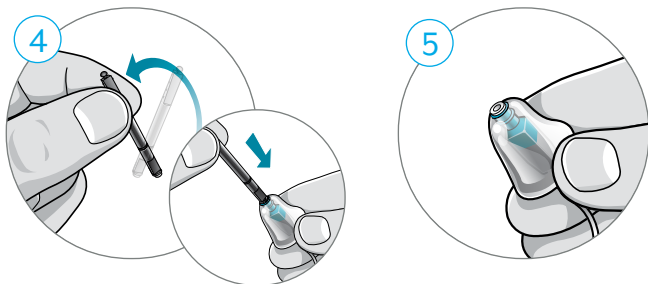
Changing Hear Clear Wax Guards

1. Hold onto the cable where the receiver enters the earmold.
2. Insert the empty end of the application stick straight into the used wax guard in the receiver.
3. Pull the stick straight out to remove the used wax guard (do not twist).



Changing Hear Clear Wax Guards *(Continued)*

4. Use the opposite end of the stick to firmly insert the clean wax guard straight into the receiver.
5. Pull the stick straight out (do not twist) and discard the stick.



For more help, visit [Starkey.com/Support](https://www.starkey.com/support)